

Composite Indicators and Scoreboards COMMUNITY of PRACTICE

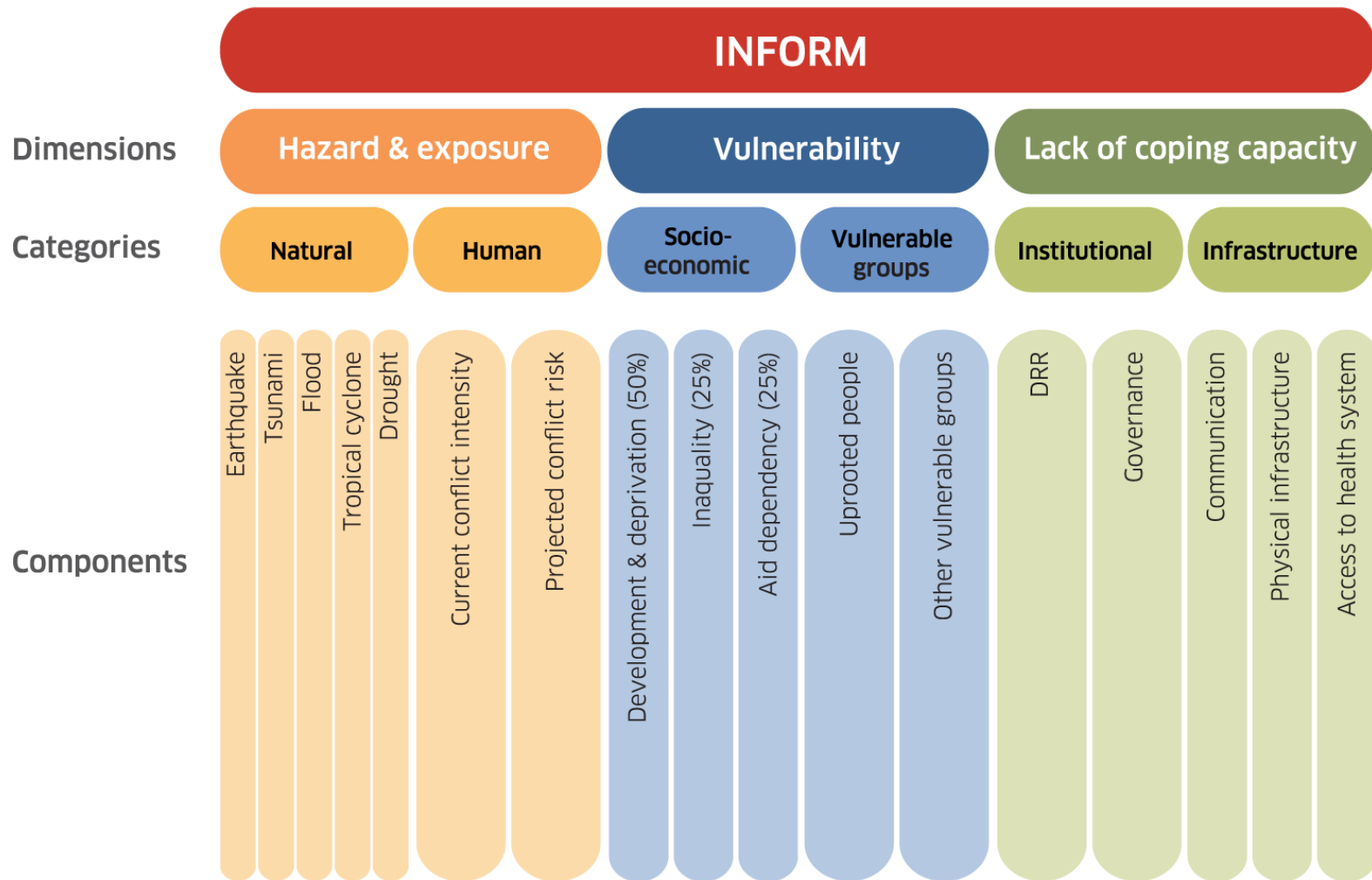
2nd Annual Meeting
09-10 November 2017
Joint Research Centre

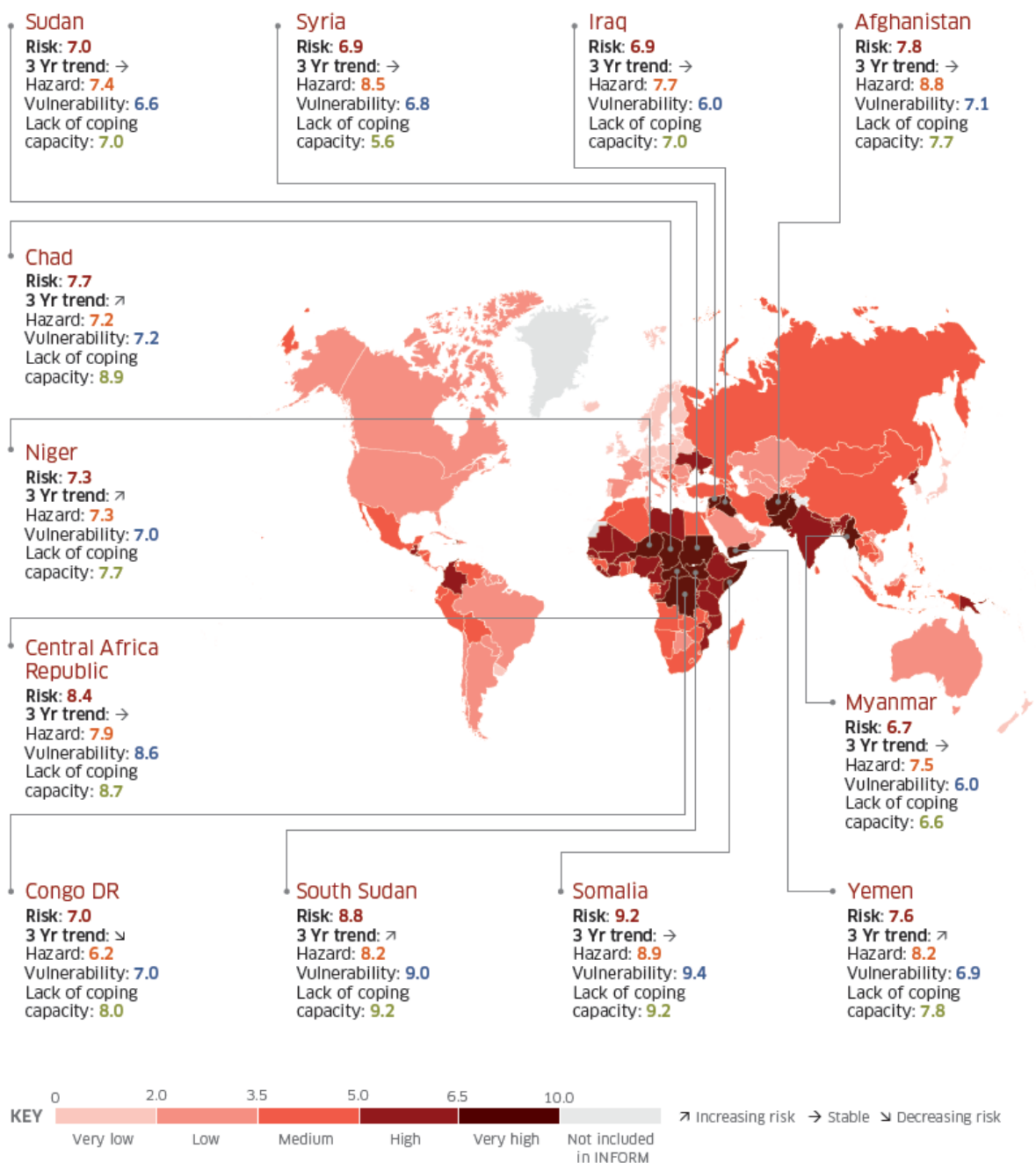
“Countries or areas of countries at risk from humanitarian emergencies that could overwhelm national response capacity and lead to a need for international assistance”

INFORM is a collaboration of the Inter-Agency Standing Committee Reference Group on Risk, Early Warning and Preparedness and the European Commission. INFORM partners include:









COUNTRY	RISK	3 YR TREND
Afghanistan	7.8	→
Albania	2.8	→
Algeria	4.4	↘
Angola	4.9	↘
Antigua and Barbuda	2.1	→
Argentina	2.5	→
Armenia	3.7	→
Australia	2.3	→
Austria	1.7	→
Azerbaijan	4.7	→
Bahamas	2.1	→
Bahrain	1.8	↗
Bangladesh	5.8	→
Barbados	1.6	→
Belarus	2.0	→
Belgium	2.1	→
Belize	3.3	→
Benin	4.4	↗
Bhutan	2.9	→
Bolivia	4.0	→
Bosnia and Herzegovina	4.1	→
Botswana	2.9	↘
Brazil	3.4	↘
Brunei Darussalam	1.7	→
Bulgaria	2.6	→
Burkina Faso	5.4	→
Burundi	6.3	↗
Cabo Verde	2.5	→
Cambodia	4.5	↘
Cameroon	6.2	↗
Canada	2.5	→
Central African Republic	8.4	→
Chad	7.7	↗
Chile	2.9	→
China	4.1	↘

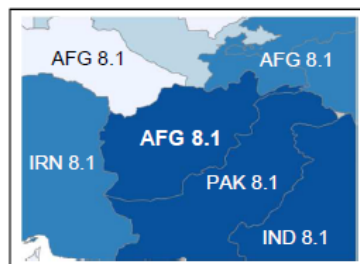
COUNTRY	RANK	INFORM RISK	3 YR TREND	HAZARD & EXPOSURE	3 YR TREND	Natural	Human	VULNERABILITY	3 YR TREND	Socio-Economic Vulnerability	Vulnerable Groups	LACK OF COPING CAPACITY	3 YR TREND	Institutional	Infrastructure
Afghanistan	3	7.9	→	8.6	→	5.5	10.0	7.2	↘	6.9	7.4	8.0	→	7.4	8.5
Albania	111	2.9	→	3.0	→	5.1	0.3	1.7	→	2.3	1.0	4.8	→	6.2	3.1
Algeria	37	4.8	→	6.3	→	3.6	8.0	3.5	→	3.3	3.6	4.9	↗	4.9	4.9
Angola	62	4.2	→	2.3	→	2.0	2.6	4.6	↘	4.5	4.7	7.1	↗	6.6	7.5
Antigua and Barbuda	144	2.3	→	2.0	→	3.7	0.0	1.7	↘	2.0	1.3	3.5	→	4.7	2.1
Argentina	138	2.4	→	2.4	→	3.1	1.7	1.5	→	1.9	1.1	3.7	→	5.0	2.1
Armenia	100	3.2	→	2.1	→	3.8	0.1	3.0	→	2.4	3.6	5.0	→	6.6	2.7
Australia	144	2.3	→	3.4	→	5.7	0.1	1.7	→	0.6	2.7	2.1	→	2.2	1.9
Austria	167	1.7	→	1.3	→	2.3	0.1	2.2	→	0.8	3.4	1.7	→	2.2	1.2
Azerbaijan	80	3.8	↘	2.3	↘	3.8	0.5	4.6	→	1.8	6.5	5.0	↘	6.5	2.9
Bahamas	154	2.0	→	1.7	→	3.2	0.0	1.6	→	2.3	0.9	3.0	→	3.1	2.8
Bahrain	188	0.8	→	0.1	→	0.1	0.1	1.6	→	1.9	1.2	3.0	→	4.2	1.6
Bangladesh	20	5.9	↗	7.2	→	8.6	5.0	4.9	↗	3.9	5.7	5.7	→	5.1	6.3
Barbados	170	1.6	→	0.9	→	1.7	0.0	1.7	↗	2.6	0.8	2.6	↗	2.7	2.4
Belarus	161	1.9	→	1.6	→	1.8	1.3	1.2	→	1.0	1.3	3.4	↘	4.9	1.5
Belgium	180	1.2	→	0.7	→	1.4	0.0	1.8	→	0.8	2.7	1.5	↘	2.1	0.8
Belize	104	3.1	→	2.7	→	4.8	0.0	2.2	→	3.2	1.0	4.9	↘	5.4	4.4
Benin	89	3.5	→	1.3	→	1.2	1.3	4.6	→	6.4	2.2	7.2	→	5.8	8.3
Bhutan	111	2.9	→	1.5	→	2.8	0.1	3.3	→	4.9	1.2	5.0	↘	4.2	5.7
Bolivia	100	3.2	→	2.2	→	3.4	0.7	2.8	→	3.4	2.2	5.5	→	5.9	5.1
Bosnia and Herzegovina	70	4.0	↗	2.9	→	3.8	1.8	4.8	↗	2.6	6.5	4.6	→	6.0	2.8
Botswana	104	3.1	→	1.5	→	2.6	0.3	4.0	→	4.3	3.6	4.9	↗	4.9	4.9
Brazil	94	3.4	→	3.7	↘	3.7	3.6	2.5	↗	2.5	2.5	4.1	→	4.9	3.3
Brunei Darussalam	182	1.1	→	0.3	→	0.6	0.0	0.9	→	1.0	0.8	4.7	→	4.9	4.5
Bulgaria	134	2.5	→	2.2	→	3.1	1.1	2.3	↗	2.0	2.6	3.2	↘	4.2	2.0
Burkina Faso	37	4.8	↗	2.6	↗	2.4	2.7	6.8	↗	7.3	6.2	6.4	↘	4.7	7.7
Burundi	42	4.6	→	2.2	→	2.5	1.8	7.0	→	7.6	6.4	6.3	↘	6.1	6.6

AFGHANISTAN

South Asia
Low-income

EXAMPLE ONLY

	Value	Rank	Trend
INFORM Risk	8.1	2	→
Hazard & Exposure	8.8	4	→
Vulnerability	7.4	6	↗
Coping capacity	8.2	8	→



RISK PROFILE

INFORM

8.1

Hazard & Exposure

8.8

Vulnerability

7.4

Coping capacity

8.2

Natural

6.3

Human

9.9

Socio-economic

8.2

Vulnerable groups

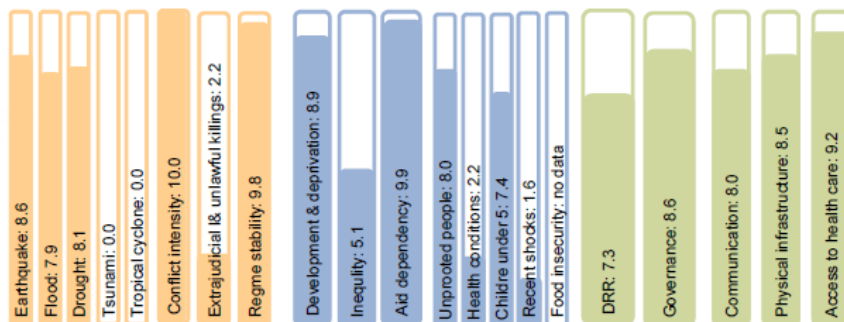
6.5

Institutional

7.9

Infrastructure

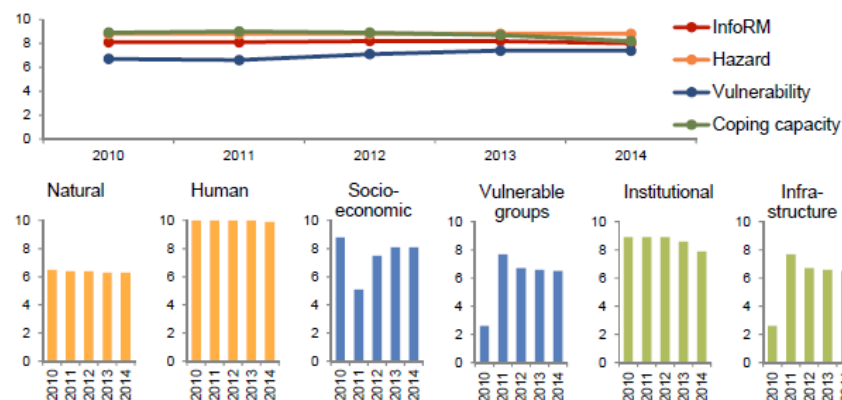
8.5



RISK INDICATORS

Indicator	Component	Index
Physical exposure to earthquake	Natural Hazard	10.0
People affected by droughts	Natural Hazard	10.0
Conflict intensity	Human Hazard	10.0
Net ODA received (% of GNI)	Aid Dependency	10.0
Per capita public and private expenditure on health care	Access to health care	10.0
Intentional homicides	Extrajudicial and Unlawful killings	0.8
Gini index	Inequality	0.7
Prevalence of HIV-AIDS above 15 years	Health conditions	0.2
Natural Disasters % of total pop	Recent shocks	0.0
Malaria mortality rate	Health conditions	0.0

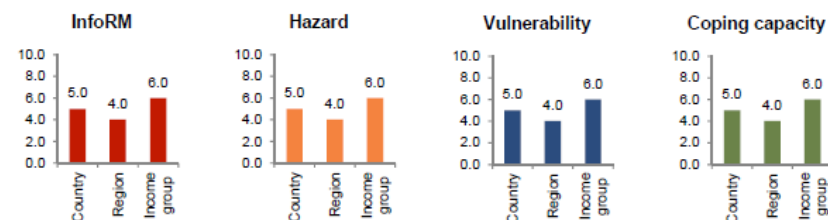
TRENDS

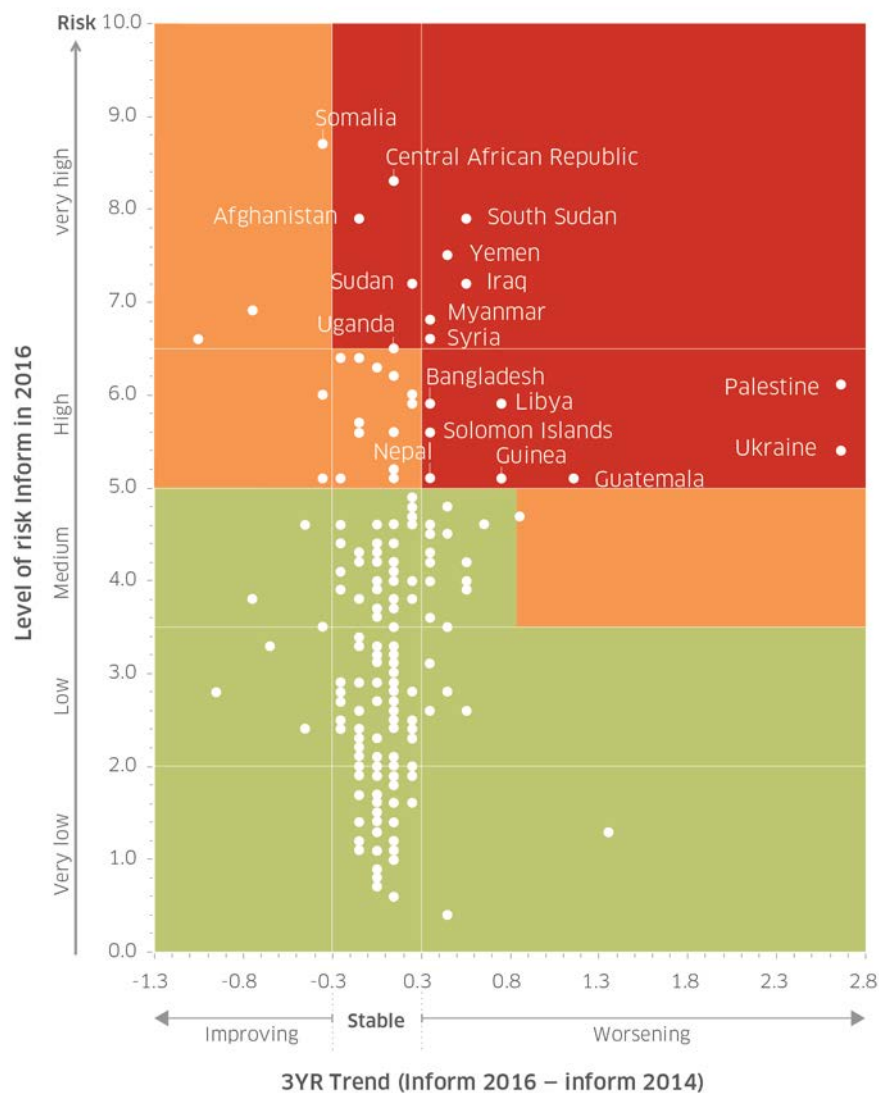


GLOBAL PEERS

	Inform	Hazard & Exposure	Vulnerability	Lack of Coping capacity
Somalia	0.0	9.2	9.4	9.6
Afghanistan	0.0	8.1	7.4	8.2
Democratic Republic of the Congo	0.0	8.0	8.0	8.4
Mali	0.0	7.7	7.6	7.8
Sudan	0.0	7.6	7.4	7.2

REGION AND INCOME GROUP CONTEXT





Very high and stable

Afghanistan
Central African Republic
Sudan
Uganda

Very high and increasing

Iraq
Myanmar
South Sudan
Syria
Yemen

High and stable

Chad
Colombia
Ethiopia
India
Kenya
Lebanon
Mozambique
Niger
Nigeria
Pakistan
Papua New Guinea
Philippines

High and increasing

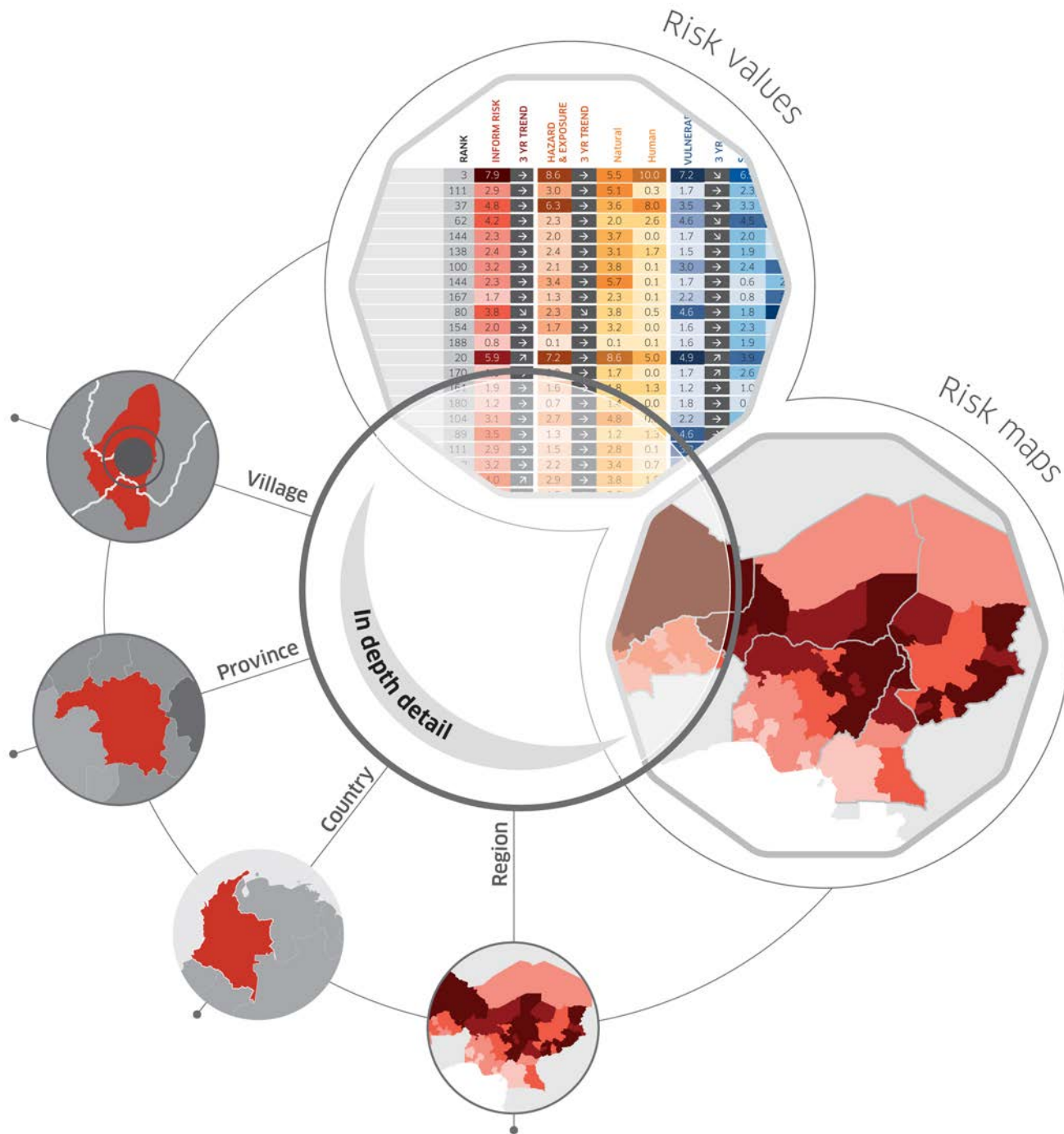
Bangladesh
Guatemala
Guinea
Libya
Nepal
Palestine
Solomon Islands
Ukraine

Medium and stable

Algeria	Micronesia
Angola	Namibia
Benin	Nicaragua
Burundi	Panama
Cambodia	Peru
China	Rwanda
Côte d'Ivoire	Senegal
Djibouti	Serbia
Dominican Republic	Sierra Leone
El Salvador	South Africa
Georgia	Tajikistan
Indonesia	Tanzania
Iran	Thailand
Jordan	Timor-Leste
Korea DPR	Togo
Lao PDR	Turkey
Liberia	Venezuela
Madagascar	Viet Nam
Mexico	Zambia
Micronesia	Zimbabwe

Medium and increasing

Bosnia and Herzegovina
Burkina Faso
Cameroon
Ecuador
Eritrea
Guinea-Bissau
Honduras
Kiribati
Lesotho
Malawi
Malaysia
Marshall Islands
Morocco
Russian Federation
Sri Lanka
Turkmenistan
Vanuatu



Challenges: understanding and communicating the reliability

INFORM LACK OF RELIABILITY INDEX

MISSING DATA

The total number of original indicators missing, including any that have been estimated (e.g. HDI derived from GDP per capita).

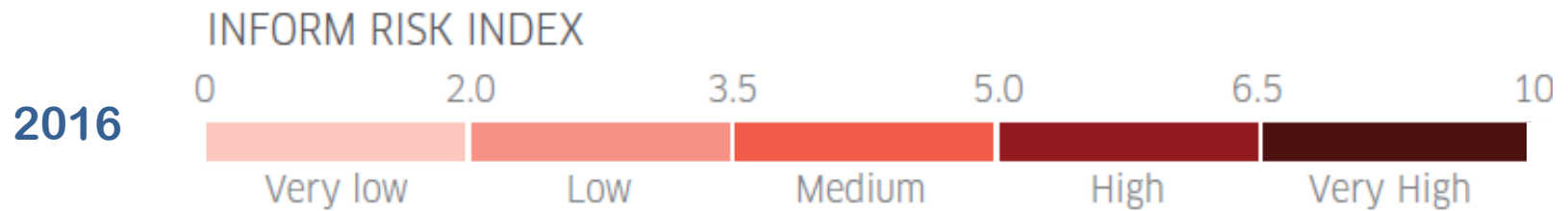
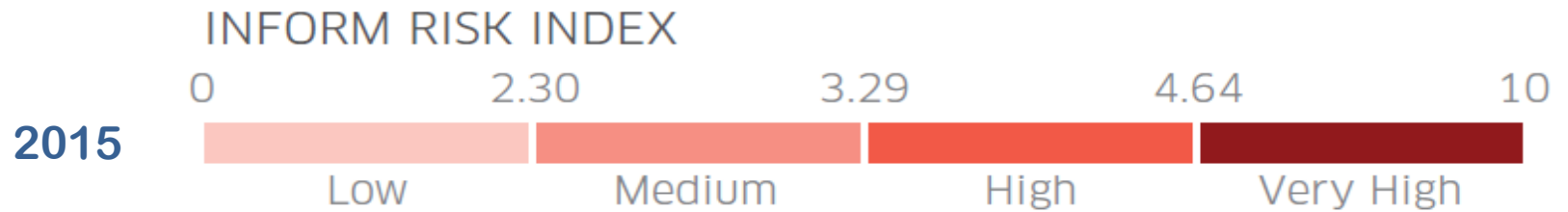
OUT OF DATE DATA

The average of the total number of years older than the reference year per indicator, to account for any older data used as a proxy for the most recent year.

CONFLICT STATUS

We define a country in conflict if the Conflict Barometer of Heidelberg Institute for International Conflict Research (HIIK) sets a conflict intensity 4 or 5 (highly violent conflict), to account for the challenges of the data collection in a country affected by conflict.

Challenges: classification



Challenges: validation

NOMINAL WEIGHTS OF INFORM DIMENSIONS AND CATEGORIES VERSUS THEIR IMPLICIT WEIGHTS

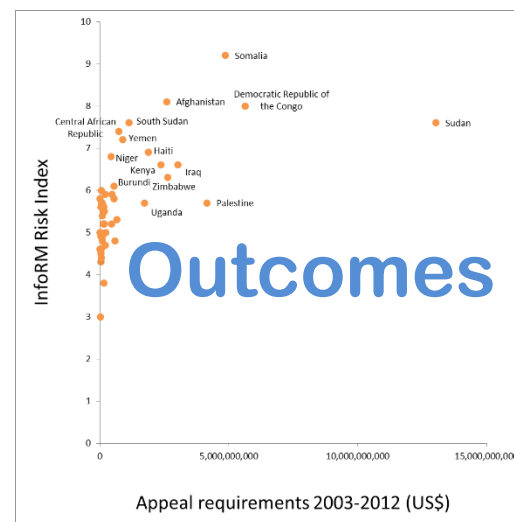
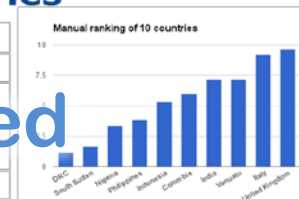
INFORM		
HAZARD & EXPOSURE	33%	67%
VULNERABILITY	33%	80%
LACK OF COPING CAPACITY	33%	71%
HAZARD & EXPOSURE		
Natural	33%	50%
Human	50%	83%
VULNERABILITY		
Socio-Economic Vulnerability	50%	71%
Vulnerable Groups	50%	77%
LACK OF COPING CAPACITY		
Institutional	50%	81%
Infrastructure	50%	88%

Statistical coherence

Case studies: 10 countries

Country	OCHA	UNICEF	FAO	UNHCR	WFP	WFP
DRC	1	1	1	1	1	2
South Sudan	2	2			1	1
Nigeria	3		4	2		
Philippines	4	5	4	3	4	3
Indonesia	5	4	5	7	6	5
Colombia	6	7	6	4	5	8
India	7	6	7	8	8	7
Vanuatu	8	8	8	6	7	6
Italy	9	10	9	9	9	9
United Kingdom	10	9	10	10	9	10

Expert based



Impact: partners/users

Number of actors adopting INFORM for risk profiling of country programmes by Sep 2017

Global
INFORM: 28
partners

- 2014: 7
- 2015: 11
- 2016: 18



Subnational
INFORM: 12 partner
groups (~25
local/regional
organisations)



Impact: use and adaptation



INFORM
(50%)

Risk of humanitarian needs (10%)



Conflict prevalence (10%)



Human rights (10%)

Food insecurity (10%)



Conflict dynamics (10%)

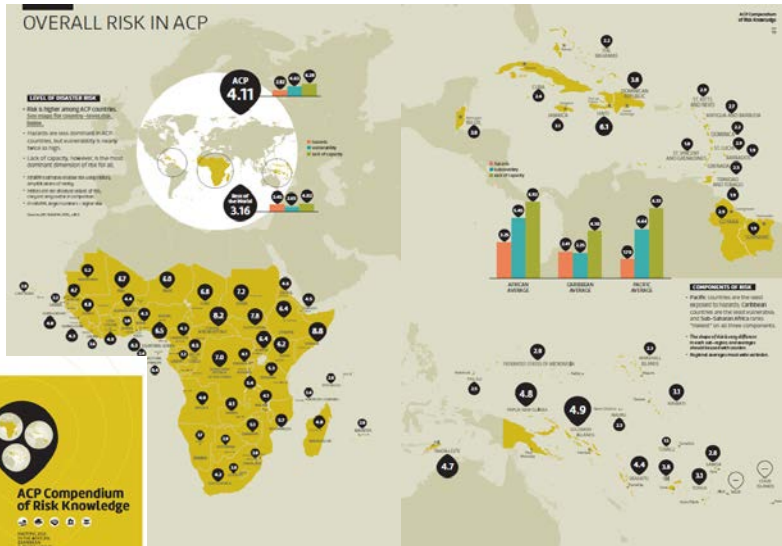
CIRV

CERF Index for Risk and Vulnerability

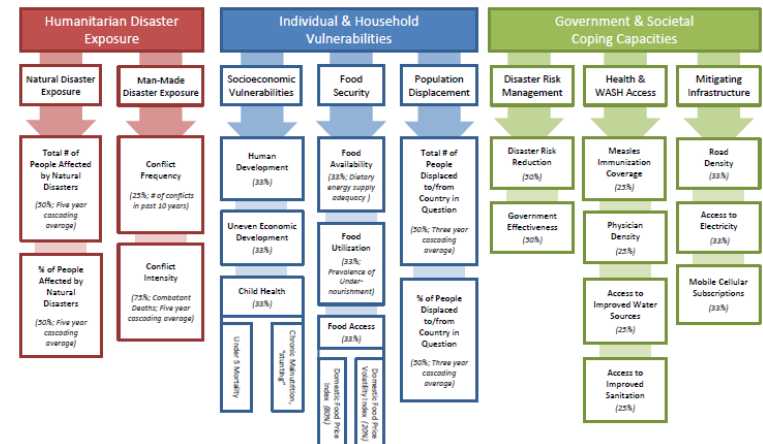
ASIA AND THE PACIFIC: 2016 Regional Focus Model



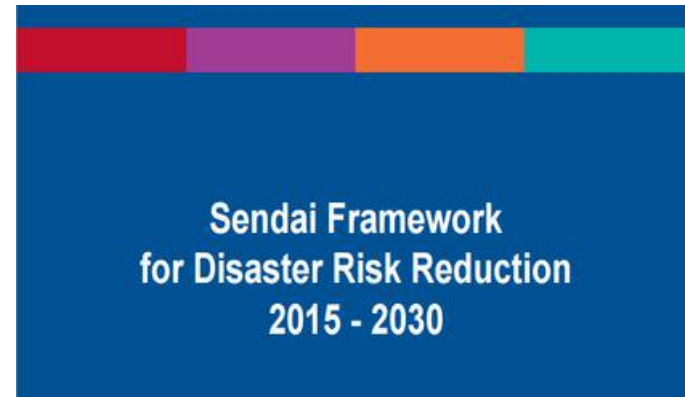
Asia and the Pacific Regional Focus Model 2016			HAZARD			VULNERABILITY										COPING CAPACITY										RISK			FOCUS		
COUNTRY	REGION	OFFICE	Natural	Human	SUB-TOTAL	Displacement & Migration	Health	Food Security	Other Vulnerable Groups	SUB-TOTAL	Displacement & Migration	Health	Food Security	Other Vulnerable Groups	SUB-TOTAL	Displacement & Migration	Health	Food Security	Other Vulnerable Groups	SUB-TOTAL	Displacement & Migration	Health	Food Security	Other Vulnerable Groups	SUB-TOTAL	RISK	FOCUS	FOCUS			
Myanmar	ACAP	0	6.2	7.0	7.7	6.4	5.5	3.3	7.7	3.2	4.4	2.2	5.2	3.8	5.8	7.1	7.7	7.4	6.0	5.2	7.3	6.2	6.8	6.7	6.9	7.5	7.5	7.5	7.5		
Philippines	ACAP	0	5.8	5.0	6.0	2.4	5.1	0.2	5.1	1.8	3.6	1.7	4.1	6.2	4.9	5.1	5.8	4.6	3.2	3.2	6.0	4.1	4.4	5.1	5.8	6.5	6.5	6.5	6.5		
Solomon Islands	ACAP	0	5.4	0.0	5.4	5.4	4	12.0	0.0	1.5	2.4	1.0	3.5	5.4	4.1	4.8	7.1	1.8	7.2	7.2	6.8	7.3	7.1	5.4	7.8	6.8	6.8	6.8	6.8		
Timor-Leste	ACAP	0	6.6	5.0	7.2	5.0	4.3	0.4	7.0	1.5	1.1	3.6	5.4	4.1	4.8	3.0	7.0	5.4	6.7	5.1	7.2	6.8	5.2	5.4	5.3	5.2	5.2	5.2	5.2		
Vanuatu	ACAP	0	5.2	0.2	5.1	5.0	6.2	3.3	4.0	4.0	4.2	10.0	4.0	6.7	5.9	6.7	6.9	6.8	8.8	8.6	8.5	8.8	8.1	5.3	5.0	5.7	5.7	5.7	5.7		
Yemen	ACAP	0	5.5	2.5	4.2	4.9	4.3	3.3	5.4	1.1	4.7	10.0	4.4	5.4	5.1	5.4	7.0	6.2	5.1	5.4	6.3	6.8	6.5	5.1	8.8	5.4	5.4	5.4	5.4		
India	ACAP	0	7.8	6.9	7.4	5.3	4.8	0.1	6.3	1.3	6.7	1.5	4.4	3.8	4.6	1.8	5.8	3.8	5.8	5.2	7.2	6.1	5.1	5.4	3.0	5.4	5.4	5.4	5.4		



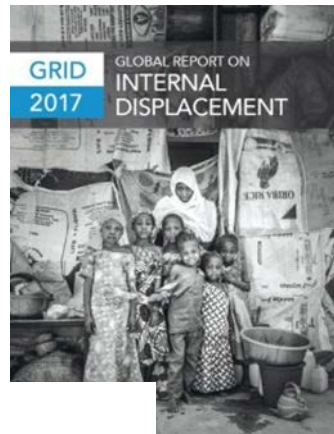
CDA Indicators for Disaster Exposure & Risk Theoretical Framework



Impact: global initiatives



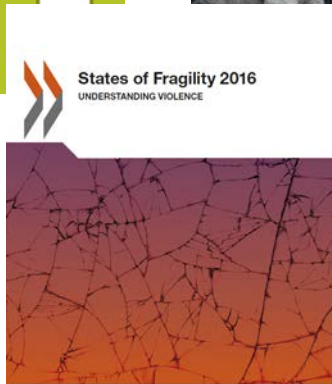
Impact: Publications by other organisations, featuring INFORM



Disaster Risk
and Age Index



Mapping Human
Presence on Earth
with the
Global Human
Settlement Layer
edited by
Francesco Paolini
Mathieu Mollat
Christophe Alami
Kempster Thonien
2016



OECD



Managing Disaster Risks
for a Resilient Future

A Work Plan for the Global Platform for Disaster Resilience and Recovery
2016-2018



THE LANCET

GFDRR



IASC

OUTLOOK PERIOD
June - November 2016



THE LANCET

Available online 12 October 2017
In Press, Corrected Proof

Articles

Local, national, and regional viral haemorrhagic fever pandemic potential in Africa: a multistage analysis

David M Pigott DPhil ^a, Aniruddha Deshpande MPH ^a, Ian Letourneau BA ^a, Chloe Morozoff MPH ^a, Robert C

PLOS CURRENTS
DISASTERS

A Comparative Analysis of Disaster Risk,
Vulnerability and Resilience Composite Indicators

March 14, 2016 • Research Article

Citation

Beccari B. A Comparative Analysis of Disaster Risk, Vulnerability and Resilience Composite Indicators. PLOS Currents Disasters. 2016 Mar 14 . Edition 1. doi: 10.1371/currents.dis.453df025e34b682e9737f95070f9b970.

Tweet

Impact: media



Annual release 
>2,000 download



>1,000 followers

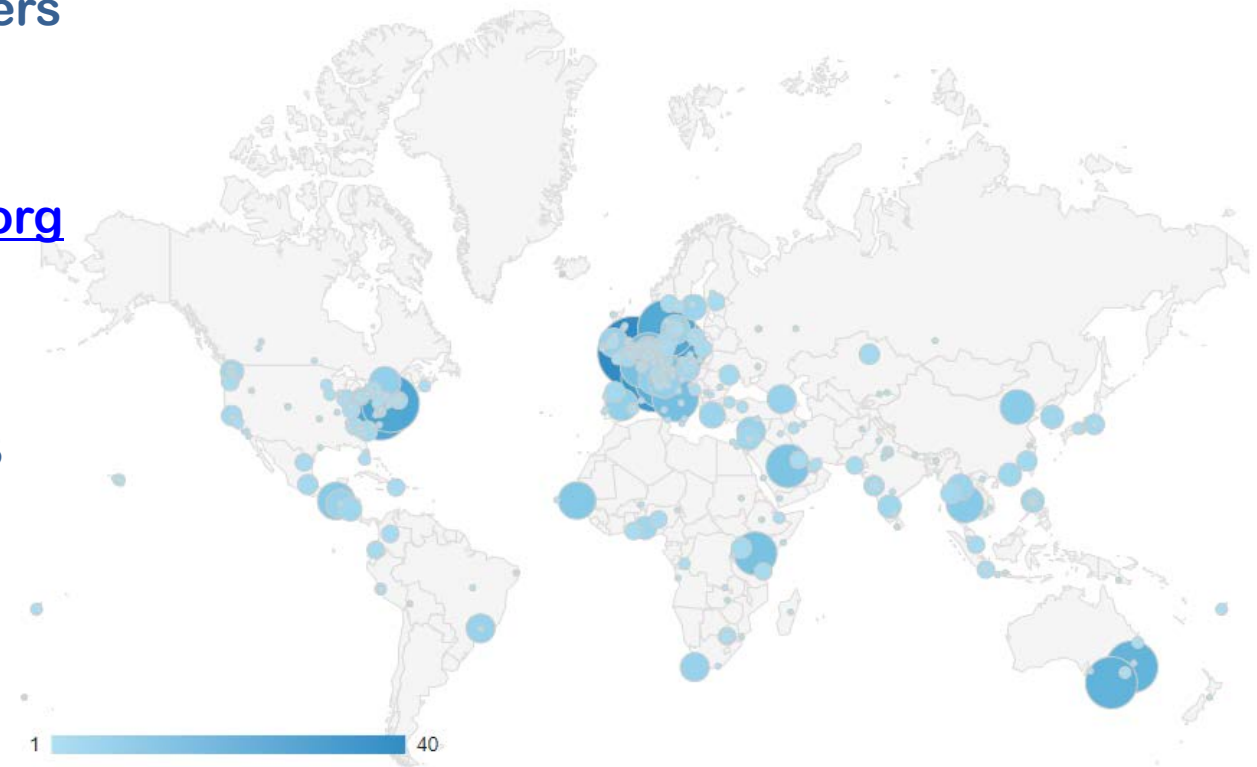
www.inform-index.org

[Nov 2016 – Nov 2017]

Sessions: 49,879

Users: 31,340

Pageviews: 114,653



INFORM

INDEX FOR RISK MANAGEMENT

Get the results...

INFORM results are available at www.inform-index.org, where you can: download a spreadsheet with all the results, calculations and source data; view and print country profiles; explore the data interactively; and find out more about how INFORM works and how you can use it.

