



European
Commission

THE FUTURE OF CITIES

OPPORTUNITIES, CHALLENGES
AND THE WAY FORWARD

Carlo Lavalle, et 70+ al.
EC/JRC Territorial Development Unit

Joint
Research
Centre



The Future of Cities

Outline

- | | |
|----------------|--|
| i. Why ? | Key Policy Questions |
| ii. How ? | Knowledge & Collective Intelligence |
| iii. What? | Key Messages & Dynamic Platform |
| iv. Outcome ? | Challenges & Policy Impact |
| v. Next steps? | Towards an Urban Observatory |

The Future of Cities

Key Questions

What are **emerging phenomena and challenges** that will shape cities in the future?

In what ways can **potential solutions** be developed?

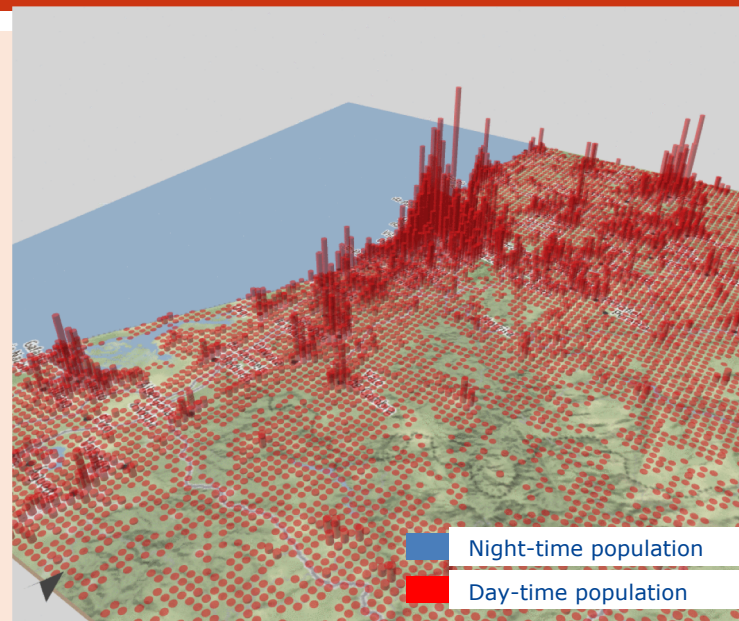
How can we **inform the priorities** of the new European Commission?



Knowledge and Collective Intelligence

i. Territorial Knowledge

- Official Statistics
- Big & Unconventional Data
- Modelling tools
- Local Strategies



ii. Community of Practice on Cities

Community of Practice on Cities



COP-CITIES

- Open network for information exchange, discussion & best-practices
- To anticipate issues and solutions
- To work with Cities for Cities

... towards an **Urban Observatory**



European Committee
of the Regions



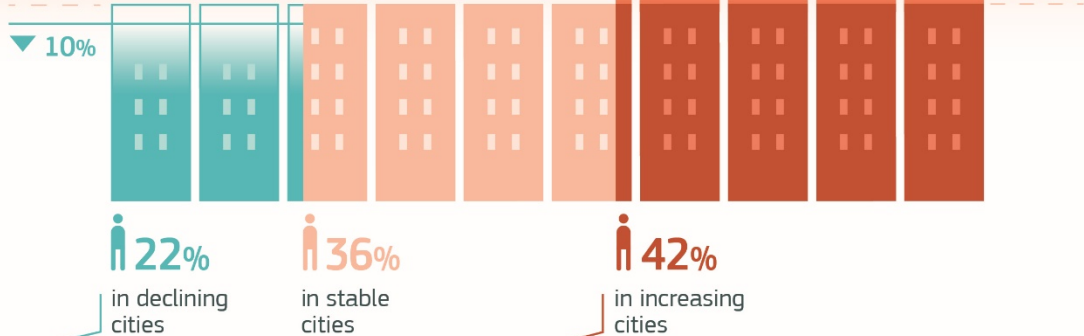
European Urban
Knowledge Network



European
Commission

Key messages - Population

By 2050, EU citizens will live...



Some small cities in **Eastern Germany, Spain, Latvia, Lithuania and Bulgaria** will experience

▼ **>25% pop. loss**

Some cities such as **Vienna, Prague, Budapest, Munich and Bologna** will experience

▲ **25-50% pop. growth**

Some cities such as **Luxembourg and Stockholm** will experience

▲ **>50% pop. growth**

Key messages – Ageing

Cities need to be more accesible and inclusive to all ages



By 2070, a European citizen will live 8 years longer. This ageing population will require adaptations, especially in spatial infrastructure

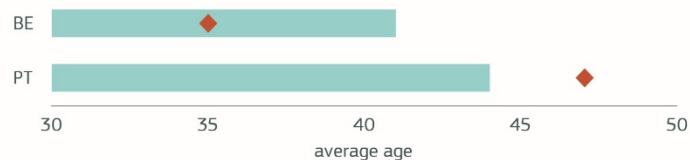


Almost half of all buildings in Europe are over 70 years old



Frequently, people living in the capital are younger, but this is not always the case...

In ♦ **Brussels**, people are on average 6 years younger than in the rest of Belgium

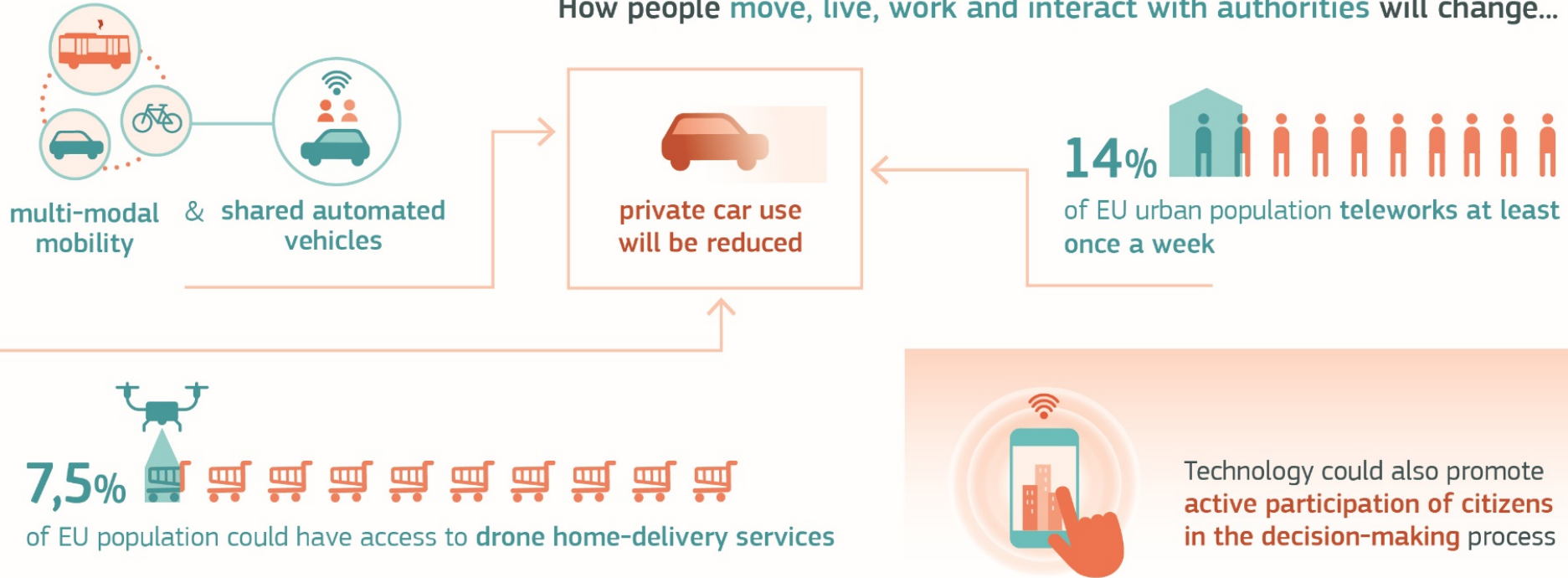


In ♦ **Lisbon**, people are on average 3 years older than in the rest of Portugal

Optimising public space is crucial to increase sustainability and quality of life in cities.

Key messages – New Technologies

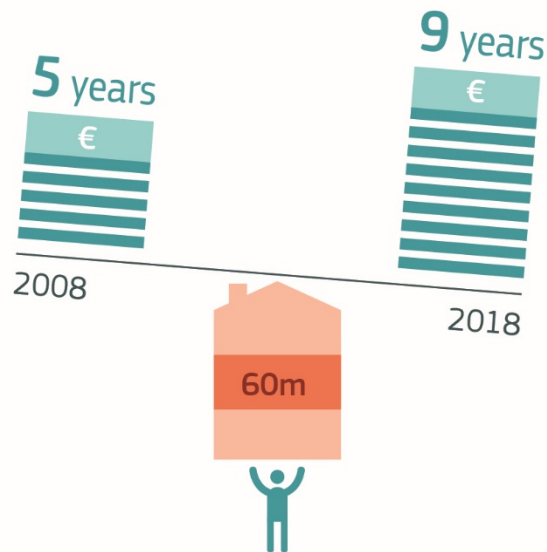
How people move, live, work and interact with authorities will change...



Key messages - Housing

Housing is getting increasingly **unaffordable** in major cities, especially for low-to-moderate income households

In Munich, to buy an apartment a worker would need:



Key messages –Power of Collective Actions



Online platform

Complementary to the report:

- Additional material
- **Dynamic update of chapters and addition of new topics**
- **Interaction space for the CoP-CITIES**

...a tool towards an Urban Observatory



About this report

Executive summary

Concluding considerations

Introductory chapters

Introduction

What is a city?

Urbanisation

Challenges

Affordable housing

Mobility

Provision of services

<https://urban.jrc.ec.europa.eu/thefutureofcities/>



European
Commission

Challenges

Territorial approach & Data challenge

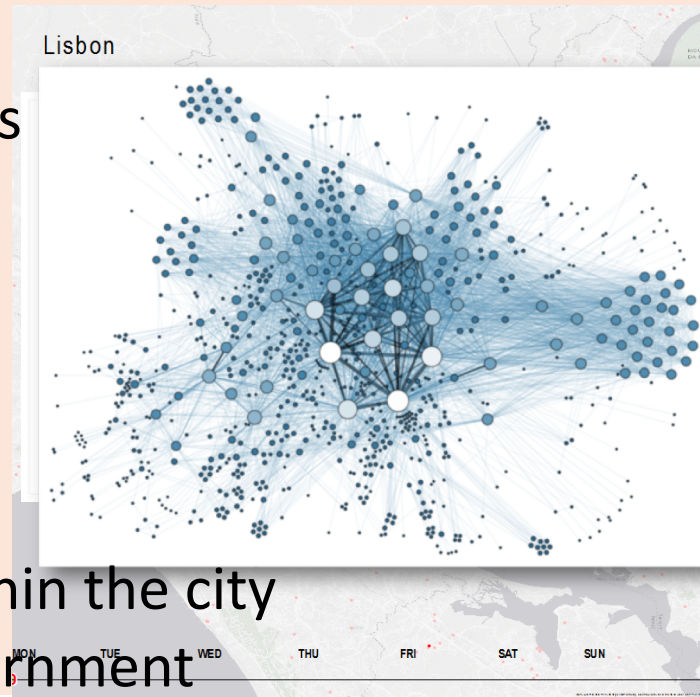
to understand spatial-temporal processes

Cities are complex systems

solutions must address several issues
simultaneously

Reach the unreachable

up-scale solutions to more cities and within the city
role of communities and systems of government



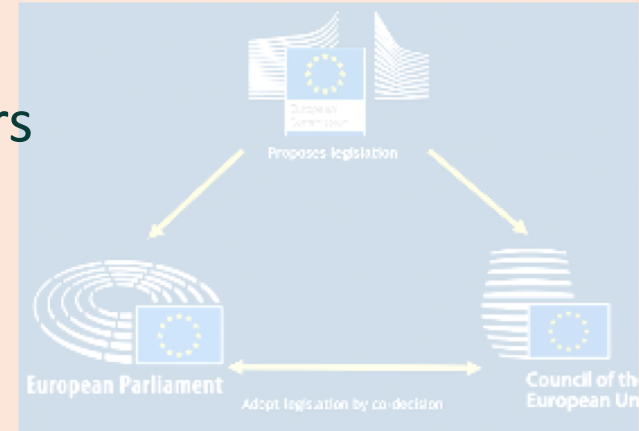
Policy Impact

Presented and discussed at

- **EU Inter-Ministerial Meeting** on Urban Affairs
- **European Parliament** URBAN Intergroup

Adopted as evidence-based support for

- **Urban Agenda** for the EU and post-2020 Period
- New Urban Agenda and Local achievements of **SDGs**
- The new Leipzig Charter for **Sustainable European Cities**

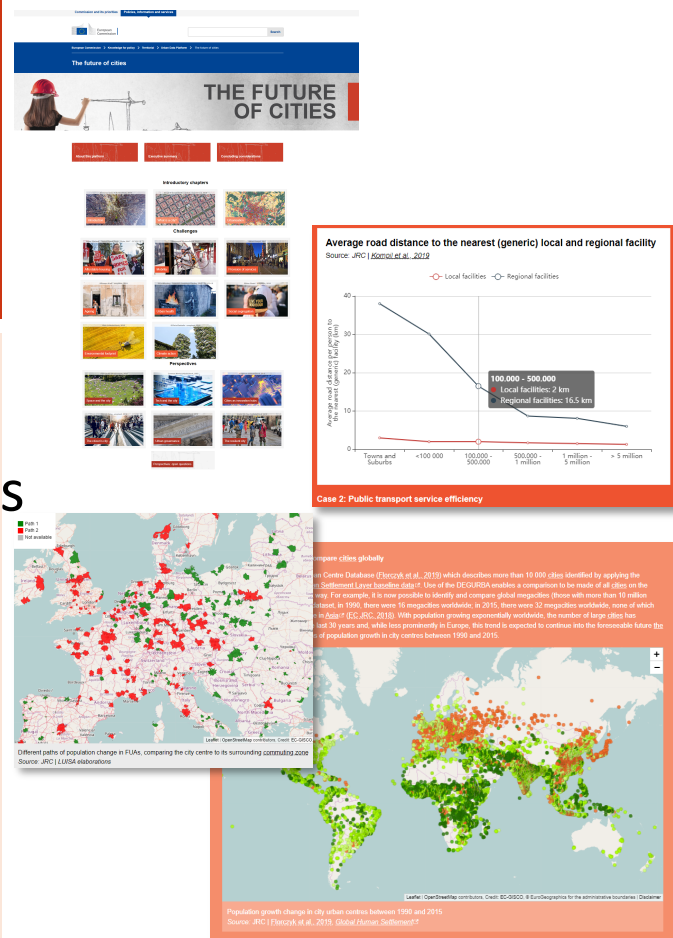


What's next?

Dynamic **Urban Observatory**, building upon:

- **CoP-Cities: open dialogue** with stakeholders and **new actors**
- **Interactive tools** (Data & Policies)
- **Foresight and anticipatory** capacity

Focus on African Cities



Working for cities with cities

Network of City-labs

- Experiment **data exchange**, understand **policy strategies** and
- Exchange on the interface Science/Research and city challenges

Policy learning and Guidance (short term)

- The Handbook of **Sustainable Urban Development** (URBADEV), support to the urban dimension of the Cohesion Policy
- European Handbook for the preparation of **Voluntary Local Reviews on SDGs** (URBAN2030) – launch at WUF 10

Urban Data Platform *plus*

- Access to information on the **status** and **trends** of **cities** and **regions**
- **Multidimensional nature:**
 - ✓ Multiple geographical levels
 - ✓ Multiple themes
 - ✓ Historical and projections
 - ✓ Multiple sources of data & strategies/investments
- Extended to **African Cities**

<https://urban.jrc.ec.europa.eu>

Urban Data Platform

The **Urban Data Platform +** is a joint initiative of the Joint Research Centre (JRC) and the Directorate General for Regional and Urban Policy (DG REGIO) of the European Commission. It is a key component of the **Knowledge Centre for Territorial Policies** and aims at providing access to information on the status and trends of **European cities**⁽¹⁾ and **regions**, as well as to the exploration of EU supported integrated urban and territorial development strategies.

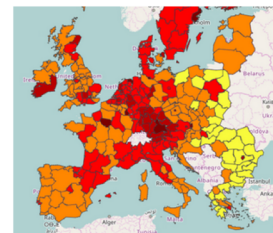


My Place

Thanks to our Territorial Dashboard, you can visit any place (city, metropolitan area, region) and discover how it performs in different areas - comparison with other places from the same region or country is also offered.

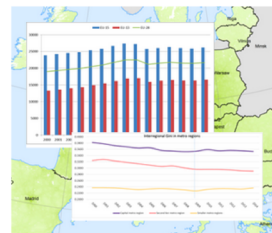


Strategies



Trends

Get an overview of trends at various territorial scales for a wealth of indicators⁽²⁾ grouped by thematic or SDG domains, allowing comparison and benchmarking of places in Europe.



Analyses

Thematic analyses try to connect the dots and provide meaningful messages out of the enormous amount of quantitative information available



The future of cities

Search for a place or NUTS code

Select conversion parameters

Convert to: Input NUTS version: Output NUTS version: Output the Format:

Build-up area: NUTS3 - 2010: 2010: km²

Upper levels: Include upper NUTS levels

Show result Download result file

Level	NUTSCode	1980	1981	1982	1983	1984	1985	1986
NUTS3	AT111	137,89	141,41	147,19	149,13	149,79	149,90	151,1
NUTS3	AT112	1382,20	1404,23	1420,90	1429,91	1439,26	1454,25	1515
NUTS3	AT113	894,45	898,91	911,36	895,61	894,27	895,96	895,1
NUTS3	AT121	2480,07	2487,62	2517,09	2524,07	2533,09	2534,07	2445

NUTS Converter

UDP: Focus on Sustainable Development Goals

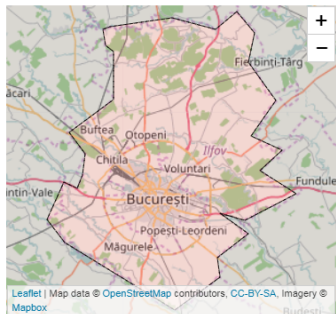
Territorial Scale
Region

Select Region
Bucuresti - Ilfov (RO32)

Select Dashboard
By Thematic Domain

Select Indicator(s)

Filter by: Reset all filters X



Romania (RO) > Bucuresti - Ilfov (RO32)

Bucuresti - Ilfov (RO32)

Total Population (2015-2030) (Ref. 2015)

2.28m inhabitants

Total Employment (2015-2030) (Ref. 2015)

1.1m employees

GDP per Head (Ref. 2015)

38.4k EUR/head

Population Density (weighted) (Ref. 2015)

207.05 inhabitants/ha

Unemployment Rate (Ref. 2017)

4.3 %

Tertiary Educational Atainment (Ref. 2017)

36.1 % of total population

Territorial Scale
Region

Select Region
Bucuresti - Ilfov (RO32)

Select Dashboard
By SDG Domain

Select Indicator(s)
Dashboard

Filter by: Reset all filters X



Romania (RO) > Bucuresti - Ilfov (RO32)

Bucuresti - Ilfov (RO32)

Total Population (2015-2030) (Ref. 2015)

2.28m inhabitants

Total Employment (2015-2030) (Ref. 2015)

1.1m employees

GDP per Head (Ref. 2015)

38.4k EUR/head

Population Density (weighted) (Ref. 2015)

207.05 inhabitants/ha

Unemployment Rate (Ref. 2017)

4.3 %

Tertiary Educational Attainment (Ref. 2017)

36.1 % of total population





Thank you for your attention!

Read the **Future of Cities** Report online:

<https://urban.jrc.ec.europa.eu/thefutureofcities>



Use the **Knowledge Centre for Territorial Policies**:

https://ec.europa.eu/knowledge4policy/territorial_en

