

# **Where are women in EU thriving?**

## **Introducing the Regional Gender Equality Monitor**

Eleni Papadimitriou, DG JRC

Hedvig Norlén, DG JRC

Lewis Dijkstra, DG REGIO

JRC Week on Composite Indicators and Scoreboards, 08/11/19

# 40% women

**in management in European Commission**


**unusual setting for decision making!**





**32%**  
**women in national  
parliaments**





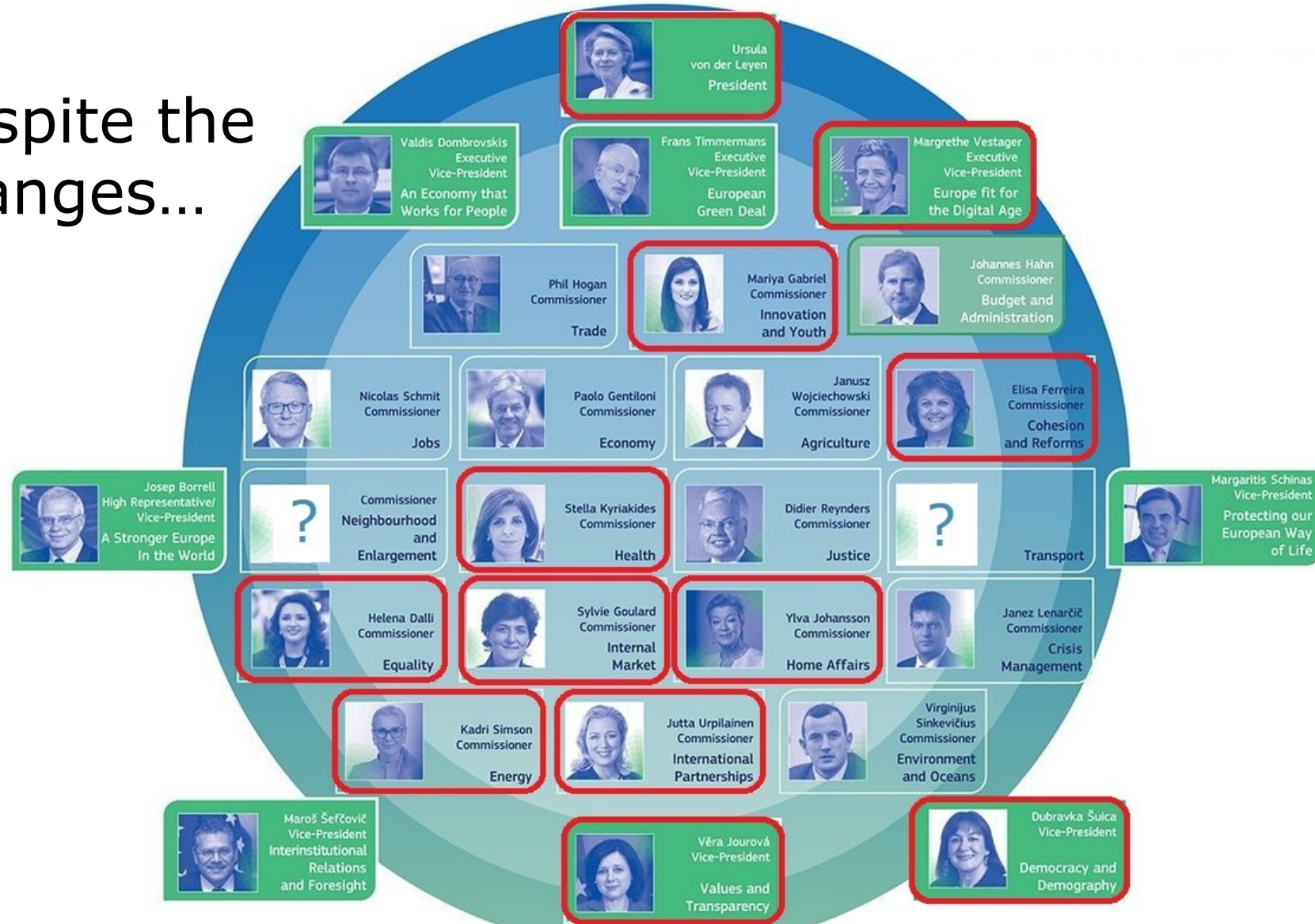
**33%**  
**women in regional  
assemblies**



**33% women in local  
& municipal councils**

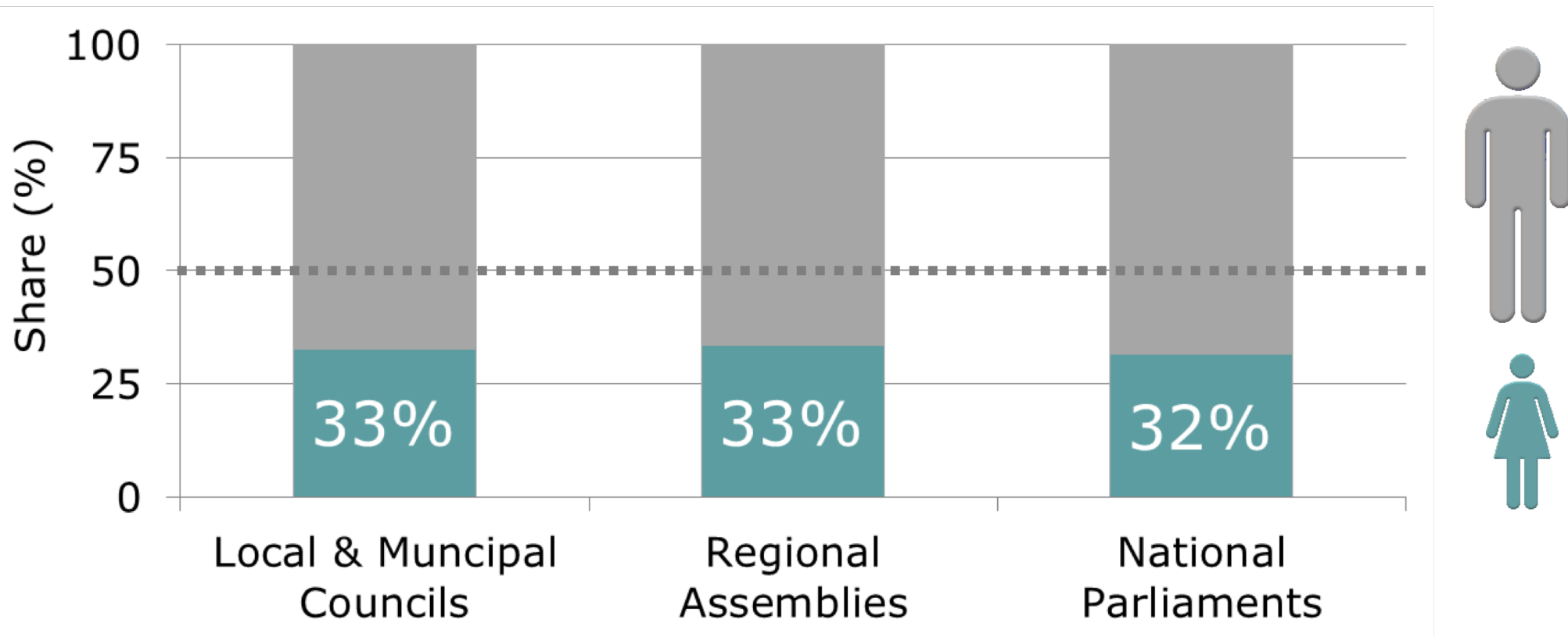


# Despite the changes...



A New Push for European Democracy

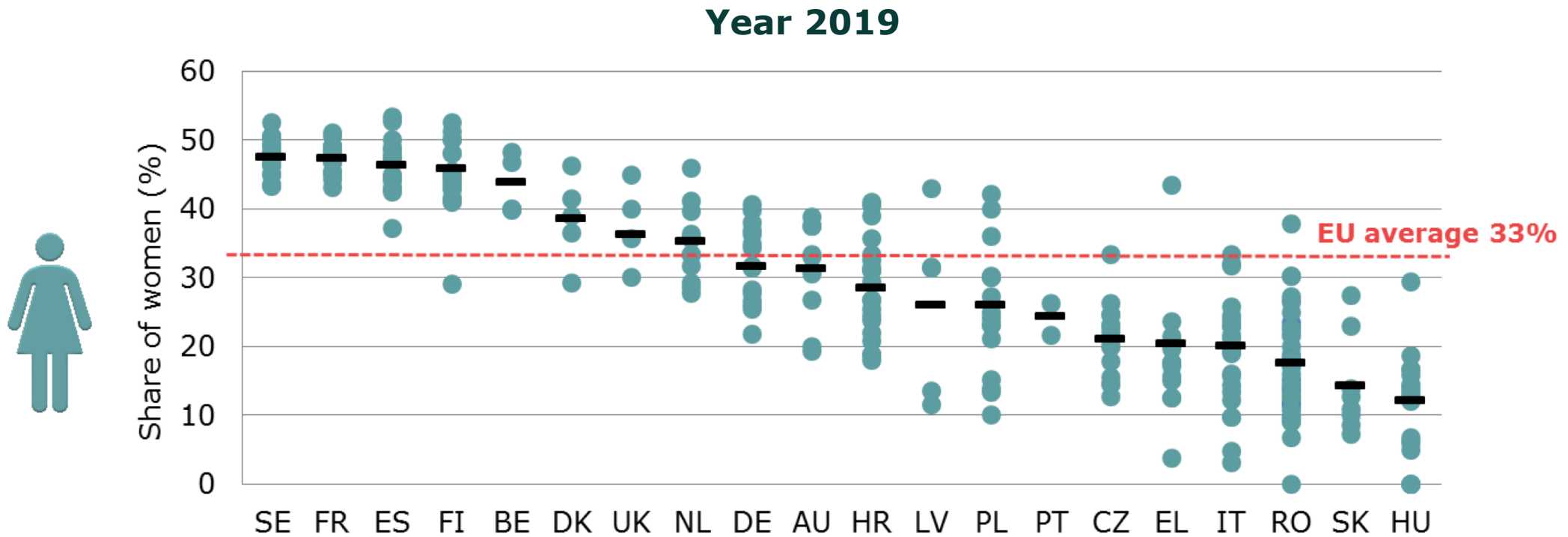
# ...unequal distribution of Power



Source: JRC calculations based on data from the Gender Statistics Database, European Institute of Gender Equality, Q3 2019.



# Regional Assemblies - national averages hide differences between regions

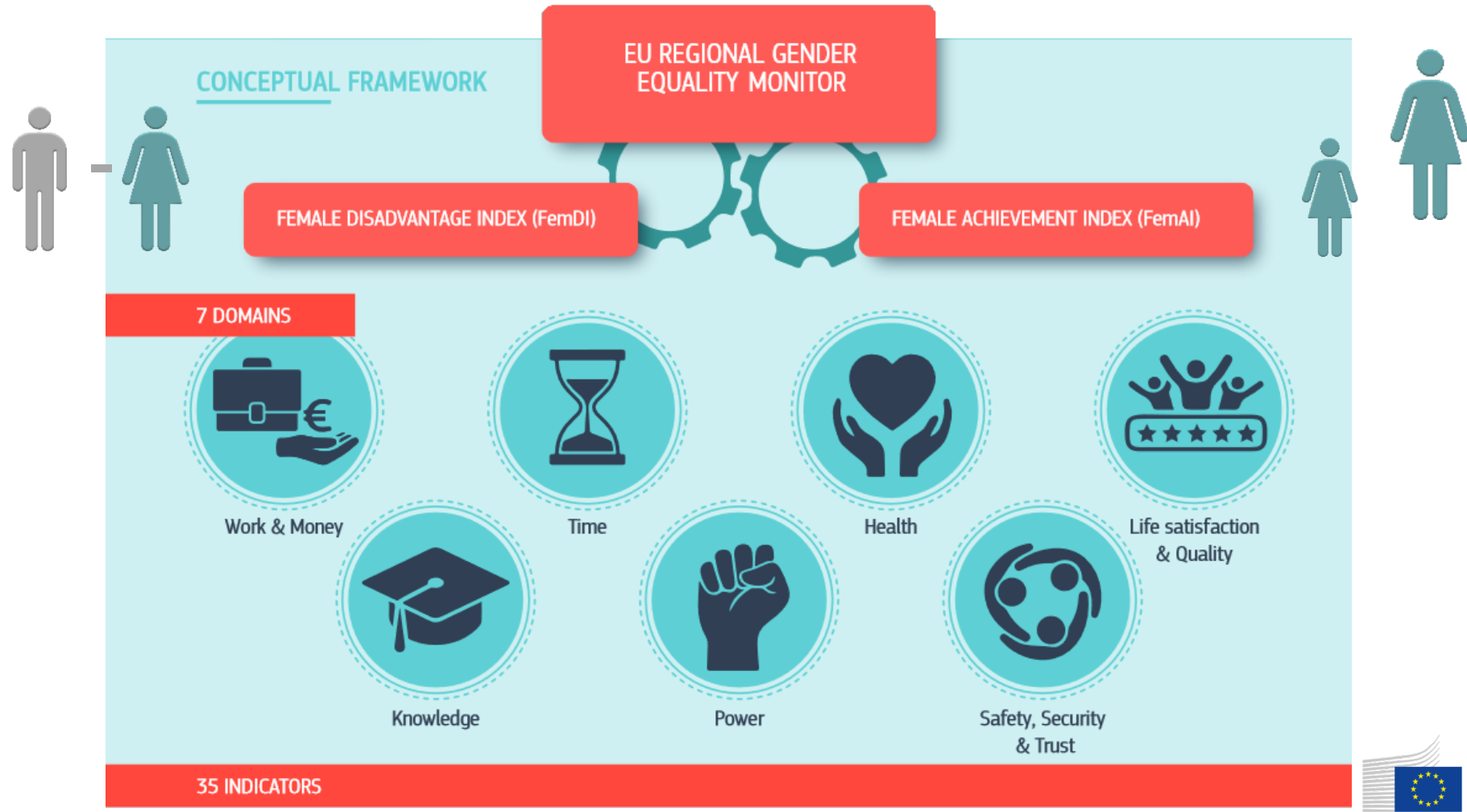


➔ **Regional monitoring is essential**

Note: 8 Member States do not have Regional Assemblies (BG, CY, EE, IE, LT, LU, MT, SI).

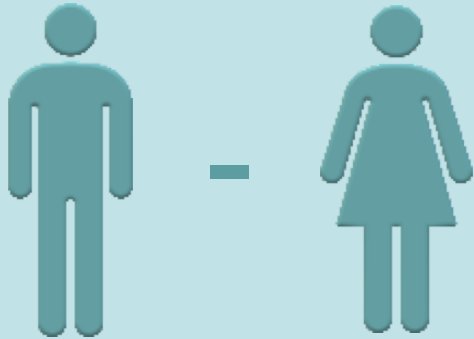


# Conceptual framework



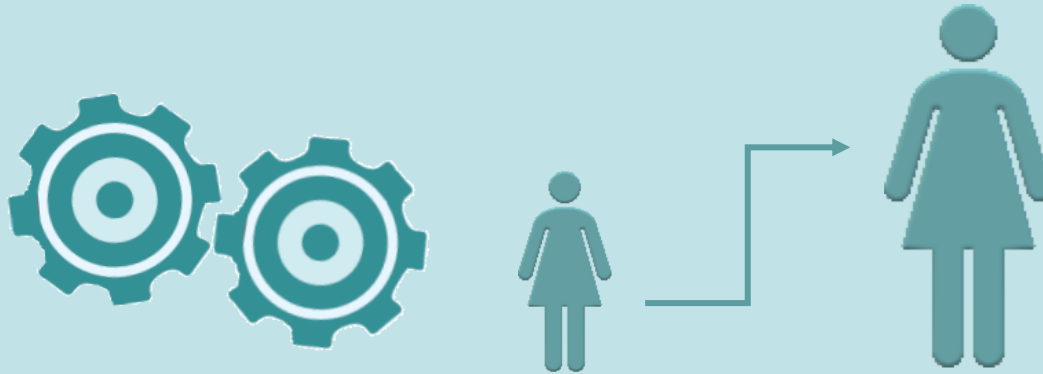
# Measure Female Achievement and Disadvantage

FEMALE DISADVANTAGE INDEX (FemDI)



Difference in  
gender gap

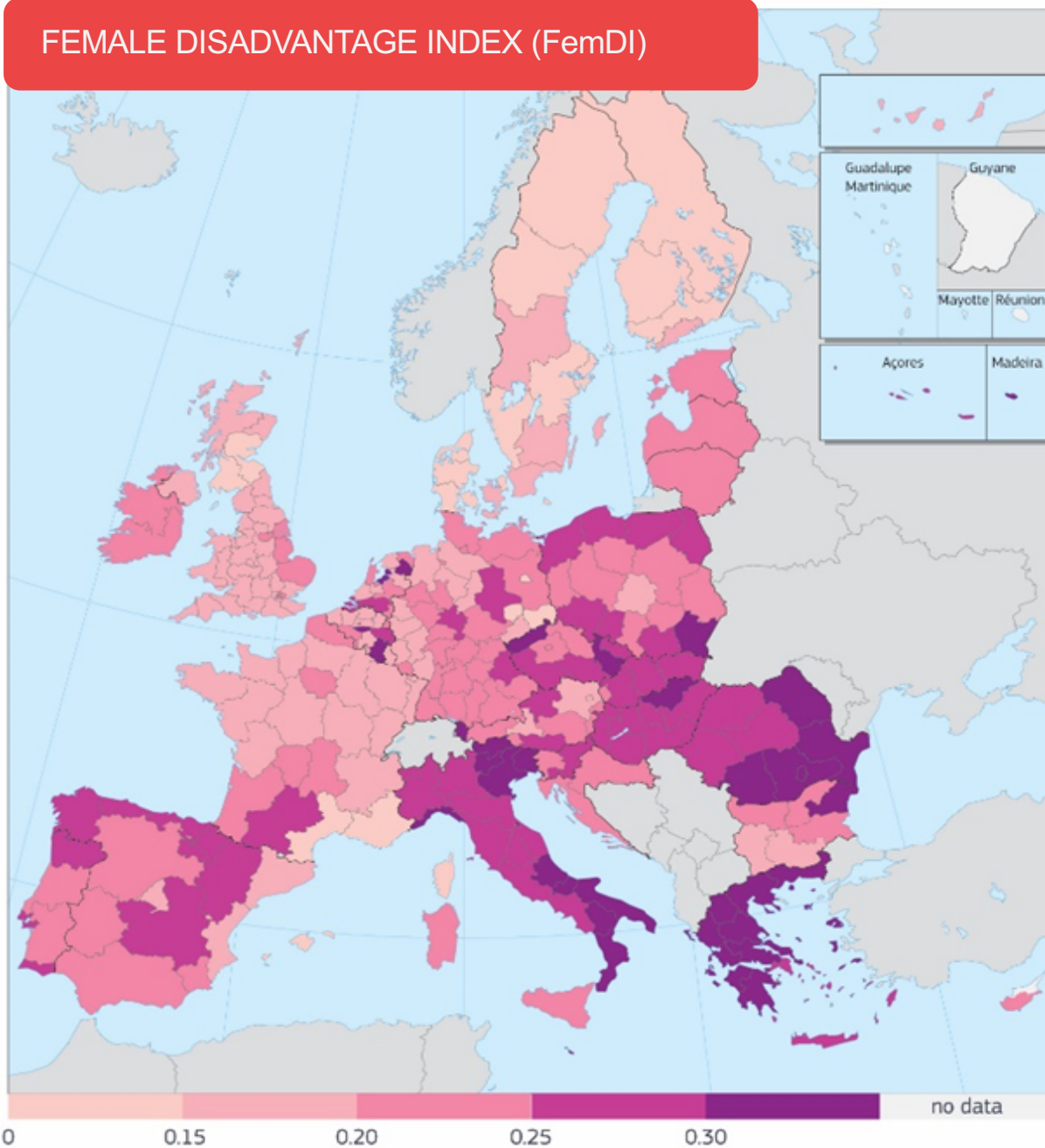
FEMALE ACHIEVEMENT INDEX (FemAI)



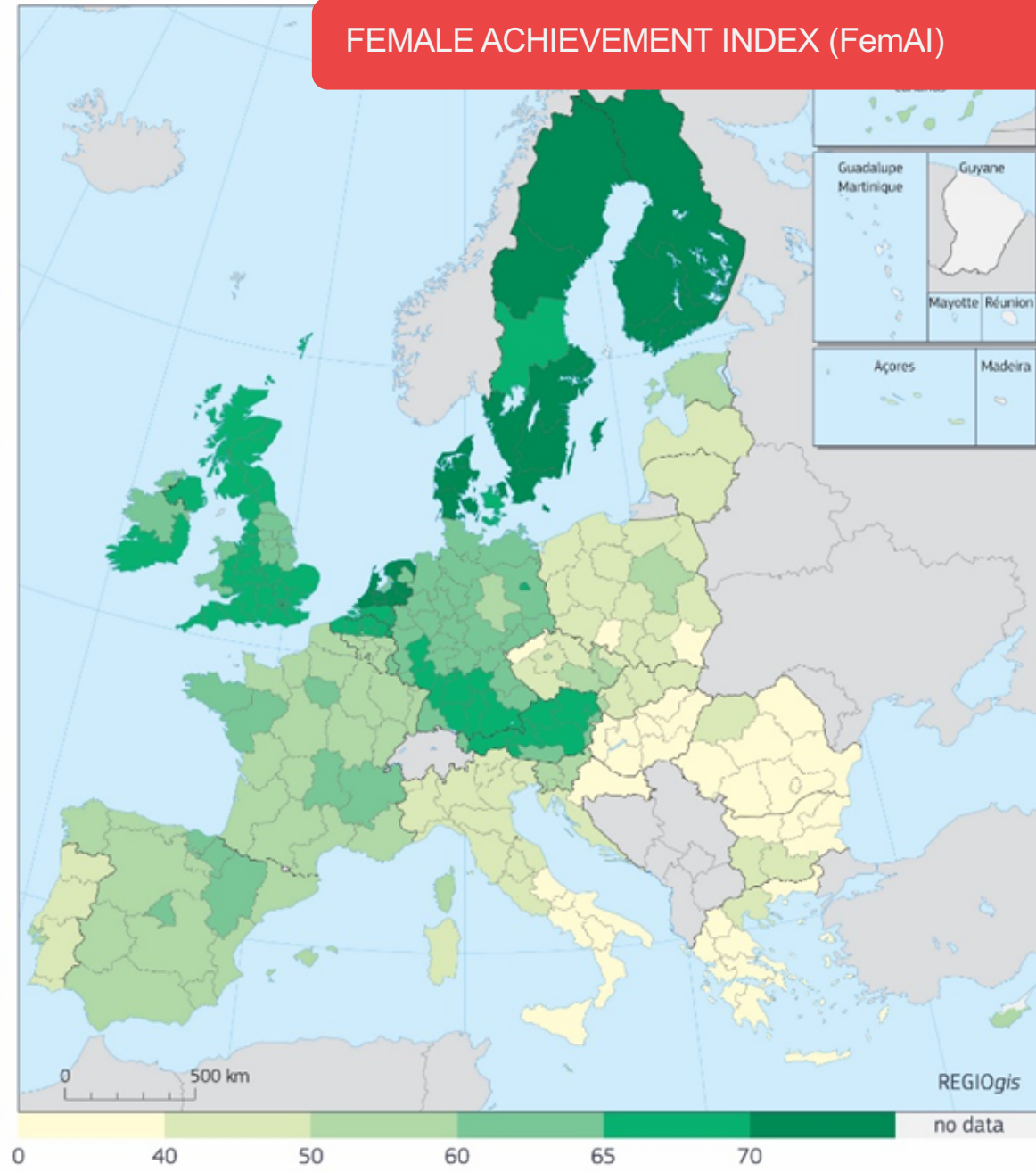
Level of female  
achievement in comparison  
to best performing region



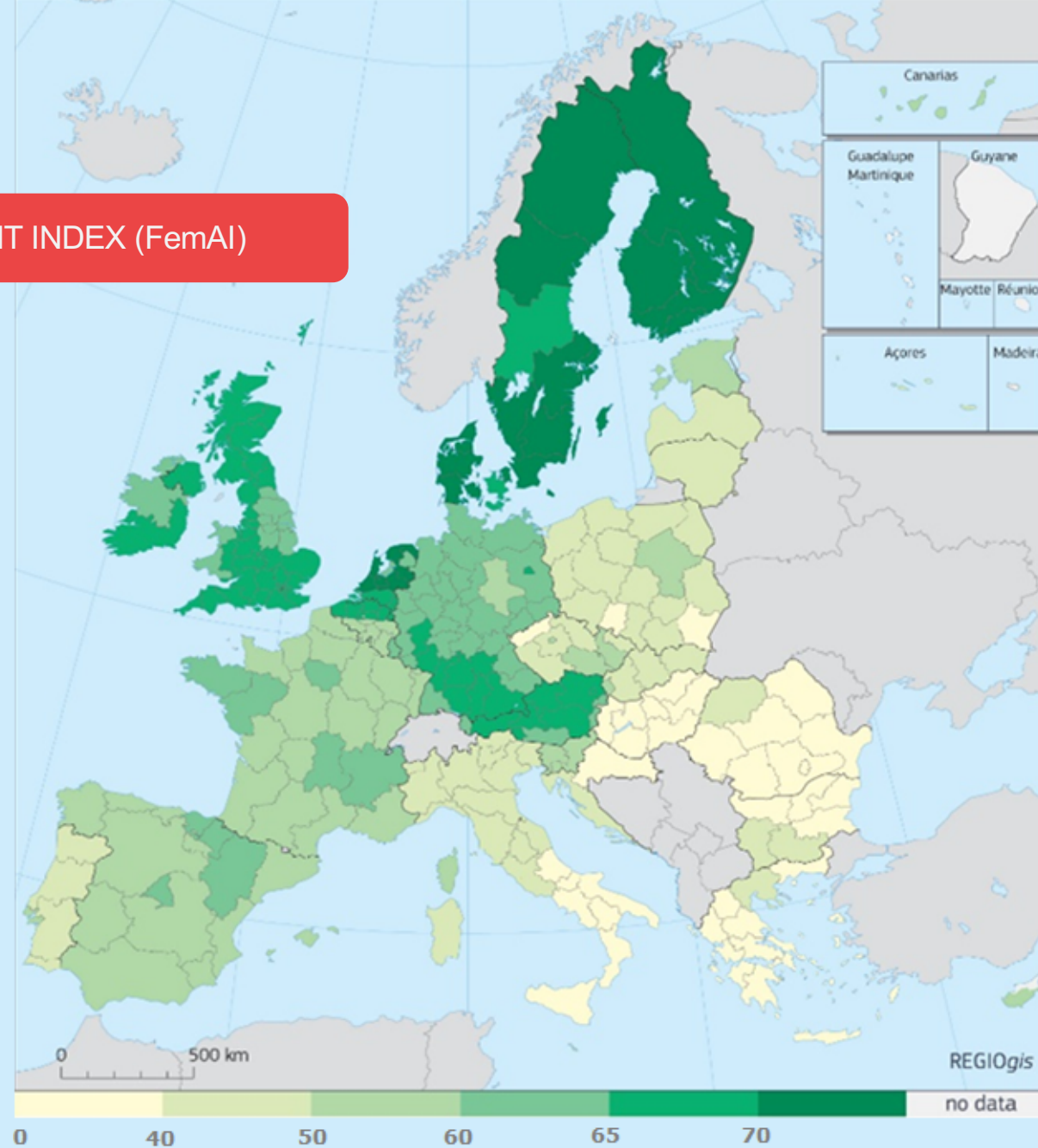
FEMALE DISADVANTAGE INDEX (FemDI)



FEMALE ACHIEVEMENT INDEX (FemAI)

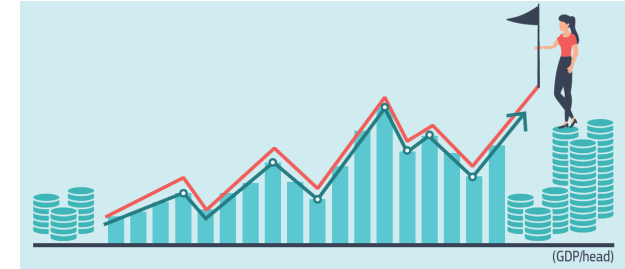
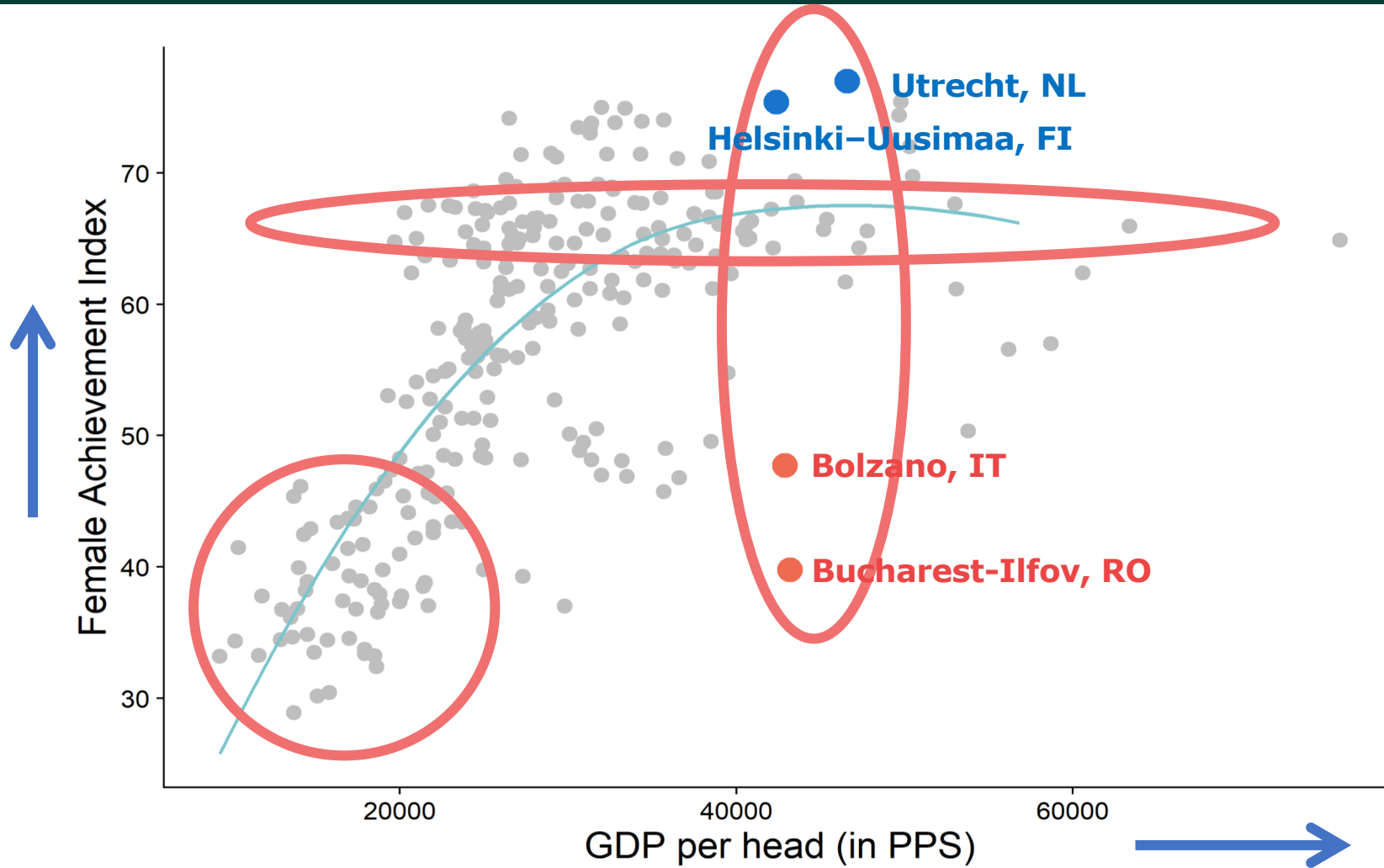


## FEMALE ACHIEVEMENT INDEX (FemAI)

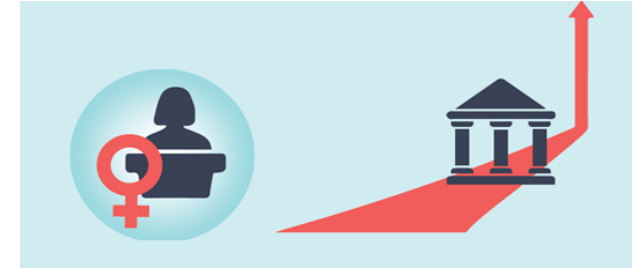




# Higher Female Achievements are linked to higher levels of GDP per head

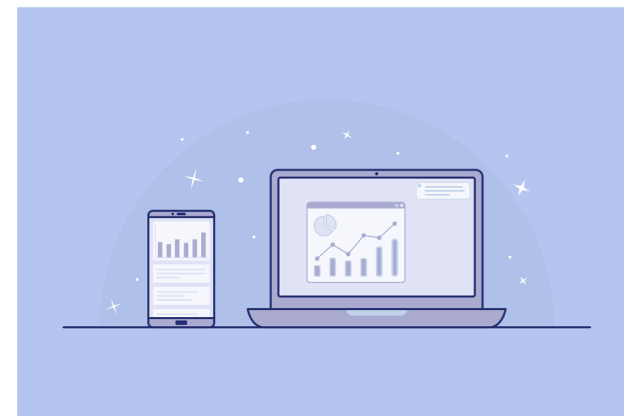
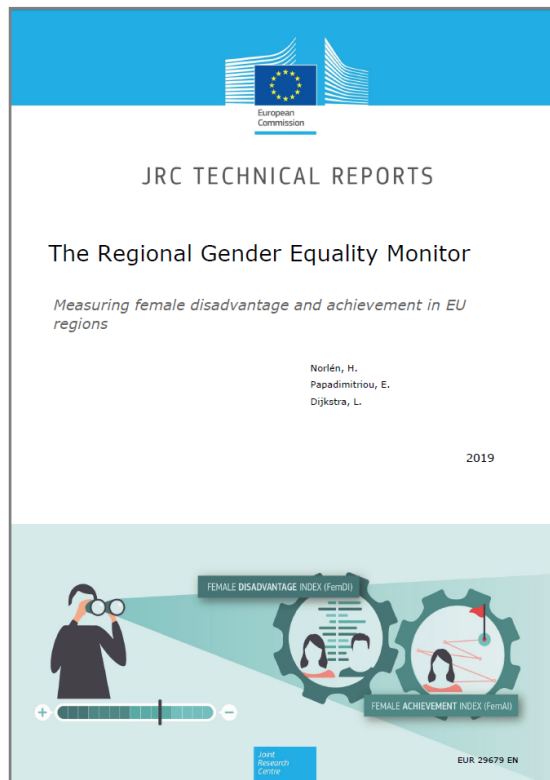
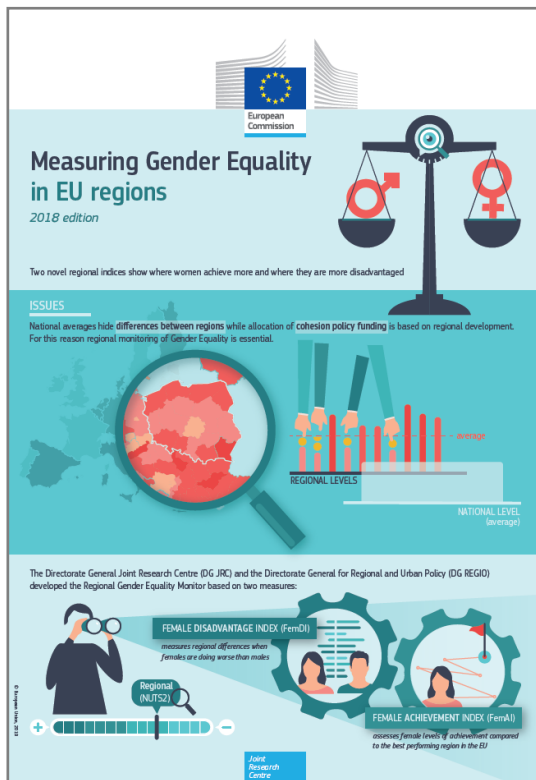


# More women in Power and higher Quality of Governance





# What is next?



# THANK YOU

Welcome to email us at:

[eleni.papadimitriou@ec.europa.eu](mailto:eleni.papadimitriou@ec.europa.eu)  
[jrc-coin@ec.europa.eu](mailto:jrc-coin@ec.europa.eu)

**COIN in the EU Science Hub**

<https://ec.europa.eu/jrc/en/coin>

**COIN tools are available at:**

<https://composite-indicators.jrc.ec.europa.eu/>

The European Commission's  
Competence Centre on Composite  
Indicators and Scoreboards

